

NEW DESIGNS
NEW FEATURES

THE Oracle COLLECTION



BOARDROOM FURNITURE

eborcraft



Eborcraft's latest Oracle collection takes boardroom furniture to a new level. A greater choice of beautiful wood veneers, including such stunning new options as Wenge and Smoked Swiss Pear ... unusual new crossbanding designs featuring dramatic veneers such as Zebrano and Madrona ... innovative new features such as illuminated frosted glass panels inset into the table ... and most importantly in today's high-tech office environment, the option to incorporate visual aids and a wire management system into many of the new Oracle tables.



One of the special attractions of the Oracle collection is that a combination of veneers and patterns can be used to create a boardroom table which is as unique as it is beautiful. With the table featured here, walnut and maple have been crossbanded to achieve a "traditional" appearance, but then given a strikingly contemporary appeal by inlaying burr walnut in a contrasting geometric design.



This conical base enables a wire management system to be invisibly incorporated, operated by a retractable power management module which is neatly fitted into the table top.

Top picture: Oval-shaped table in American Black Walnut crossbanded with Maple and with Burr Walnut inlay, on pedestal bases with polished chrome finish

Bottom picture: Alternative conical bases



A special feature of tables in the Oracle collection is that the edges can be finished with either a matching or contrasting veneer. The Smoked Swiss Pear table featured below has a Maple edging to complement the inlay, giving it an unusual and eye-catching appearance.

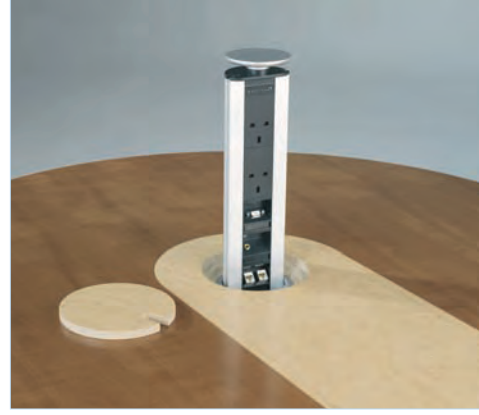


Top picture: Semi-circular ended table in Smoked Swiss Pear (bespoke) with Bird's Eye Maple inlay, on domed pedestal bases with polished chrome finish

A dramatic optional addition to the rectangular table pictured below is the frosted glass illuminated panel with stainless steel rim, transforming a classic-shaped table to a modernistic design.



Rectangular table in American Black Walnut on slab-end bases



Boardroom furniture is often as much about prestige as functionality. This stunning boardroom table, designed to seat up to 26 people, creates an immediate impact and is just one of many bespoke designs which Eborcraft has manufactured.



Barrel-shaped table in Maple, with Burr Walnut inlay on aerofoil bases

The Smoked Swiss Pear table pictured below is discreetly fitted with a wire management system concealed in the cylindrical base. It is operated via a slimline power management module, which neatly retracts into the table top and is covered by a flush-fitting cap.



The impression conveyed by a boardroom table can be dramatically altered according to the style of base which is fitted. In previous pages, the Smoked Swiss Pear table pictured above was featured with a choice of chrome bases for an ultra-contemporary appearance, whilst here a cylindrical wood base combines a modern style with a traditional material to give it a timeless appearance suitable for any corporate environment.

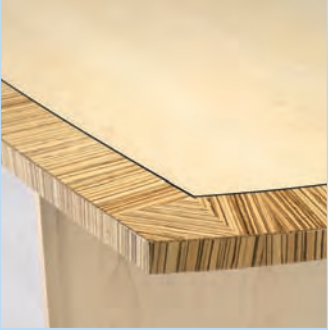


Semi-circular ended table in Smoked Swiss Pear (bespoke) with Bird's Eye Maple inlay, on cylindrical bases

The Visual table design can be fitted with a monitor lift and power management module, both of which fit flush to the table when not in use. The tapered shape of the table enables all participants to enjoy an unrestricted view of the visual aid.



Visual table design in Maple with Madrona inlay (bespoke), on square bases



The striking effect of this table is further enhanced by a special vertical edging veneer, giving a wrap-around appearance



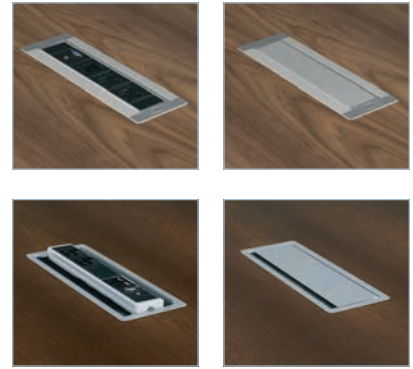
A selection of tables within the Oracle collection can be fitted with wire management systems, which are neatly concealed within the base by a discreet removable panel.



*Top picture: Dual curve table in Maple and Zebrano crossbanding (bespoke) on aerofoil bases
Bottom picture: Alternative extended cylindrical bases*

A classic rectangular table can be given a bespoke appearance by inserting a contrasting veneer to form a unique pattern. Any inlay design can be specified, including logos.

A choice of control panel for the wire management system is available. Both options are inset into the table top to give an unobtrusive appearance.

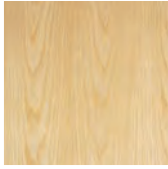


The impact of a table can be enhanced simply by increasing the depth of the table top, as this top with 50mm thickness demonstrates.

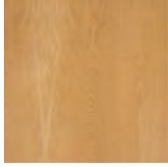


Top picture: Rectangular table in American Black Walnut with Burr Ash inlay detail, on slab-end bases
Bottom picture: Rectangular table in Wenge (bespoke) on square bases

Veneer Options



Ash



Steamed Beech



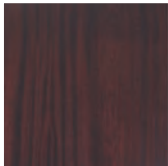
Cherry Shade 3



Kevasingo Shade 3



Oak



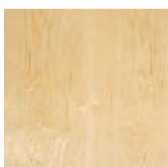
Sapele Shade 3



Bird's Eye Maple



American Black Walnut



Crown Cut Maple



English Pippy Oak

Crossbanded Veneer Options



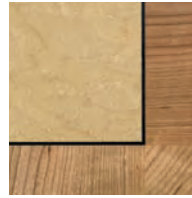
Maple/
Natural Cherry



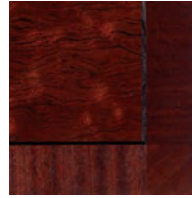
Bird's Eye Maple/
Maple



English Pippy Oak/
Oak



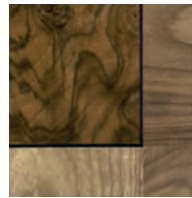
Bird's Eye Maple/
Natural Cherry



Kevasingo Shade 3/
Sapele Shade 3



Maple/
American Black Walnut



Burr Walnut/
American Black Walnut

Crossbanding is a decorative effect achieved by combining two veneers with a fine inlaid band to create an attractive border.

Edge Options



E1 detail



E2 detail



E3 detail



E4 detail



E5 detail



E6 detail



E7 detail

Other veneer and crossbanding options are available on request



Barrel-shaped table in Oak, with English Pippy Oak inlay, on trefoil bases

See separate price list for dimensions and specifications. We reserve the right to alter specifications without prior notice. E & OE. Colours shown are as accurate as the printing process will allow. We recommend that you ask your retailer for a veneer sample prior to order.



Certificate Number 3770
ISO 9001: 2008

eborcraft

Eborcraft Ltd, Chessingham Park, Dunnington, York YO19 5SE

tel 01904 481020 | fax 01904 481022 | sales@eborcraft.co.uk | www.eborcraft.co.uk